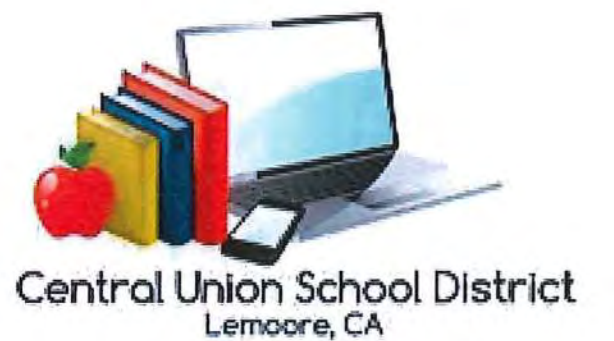




S I M

AKERS ELEMENTARY SCHOOL
MODERNIZATION: SCHEMATIC PHASE
DATE: 09.30.2016





Central Union School District
Lemoore, CA

Admiral Akers Elementary School Proposal – Naval Air Station Lemoore

Project Narrative

1) Environmental Issues

- a) Removal of asbestos material contained in flooring and wall structures throughout the campus
- b) Removal of single ply windows and installation of energy efficient window systems

2) Safety/Security

- a) Installation of security cameras campus wide
- b) Installation of fence structures to direct traffic flow and enhance campus safety/security
- c) Install blast resistant glass in window where required
- d) Install Barricade barriers where required

3) Facilities

Modernization

- a) Relocation of the school office to the front of the campus
- b) Remodel of library media technology center
- c) Create computer lab adjacent library
- d) Expansion of kitchen serving facilities
- e) Existing playfield improvements
- f) Existing hard court improvements
- g) Replace existing exterior doors and frames
- h) ADA path of travel upgrades
- i) Elimination of all portable classrooms. What shall be done with areas where they were remodeled?

New Construction

- j) Creation of a junior high school wing on the campus: 6, 7, 8 grades, 14 classrooms, 2 sets of restrooms, 2 offices, storage, workroom.
- k) Construction of a multi-purpose gymnasium (event center) with music room facility and locker rooms for boys or girls
- l) Expansion and improvement of Parking lot
- m) Courtyard improvements
- n) Concrete planters and benches

4) Utility/Systems Issues

- a) Electrical system improvements
- b) Replace HVAC units
- c) FA system upgrade
- d) Emergency lighting upgrade
- e) Fire Sprinkler system upgrade
- f) Plumbing system upgrade



NEW 6TH, 7TH, & 8TH GRADE CLASSROOM BUILDING
FRONT VIEW

#9





NEW 6TH, 7TH, & 8TH GRADE CLASSROOM BUILDING

REAR VIEW

#10





EVENT CENTER

#11

CLERESTORY WINDOWS

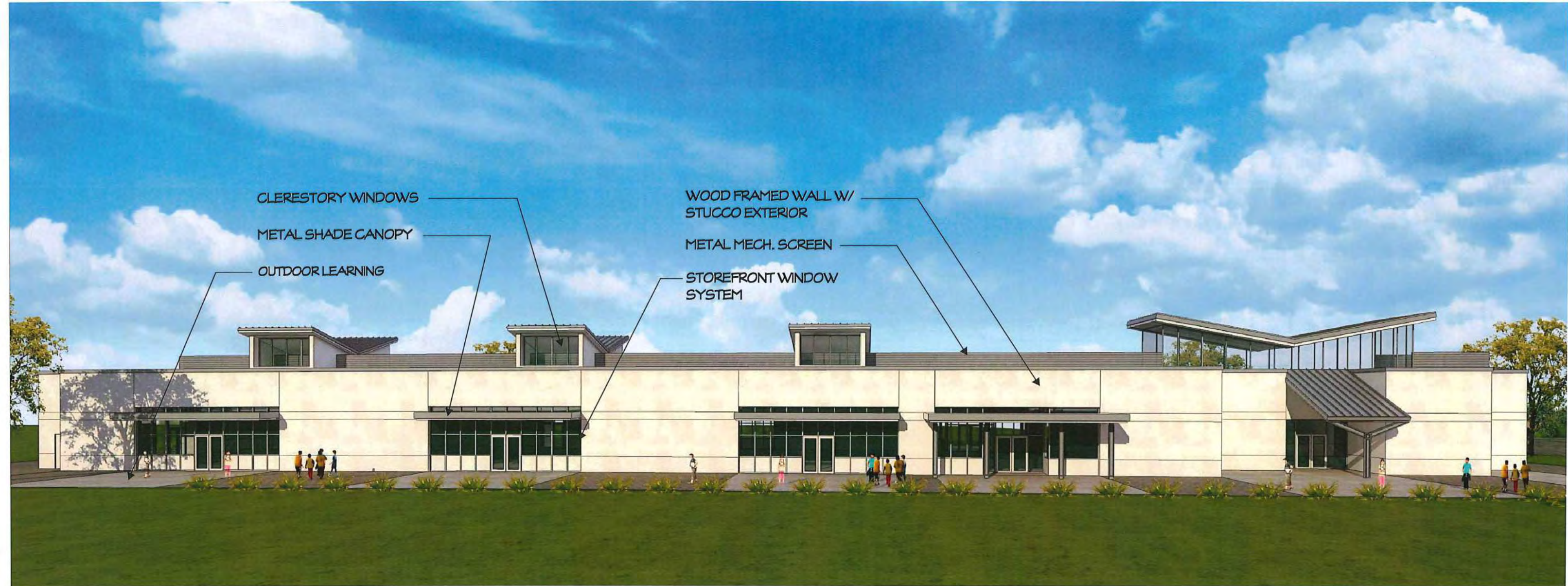
METAL SHADE CANOPY

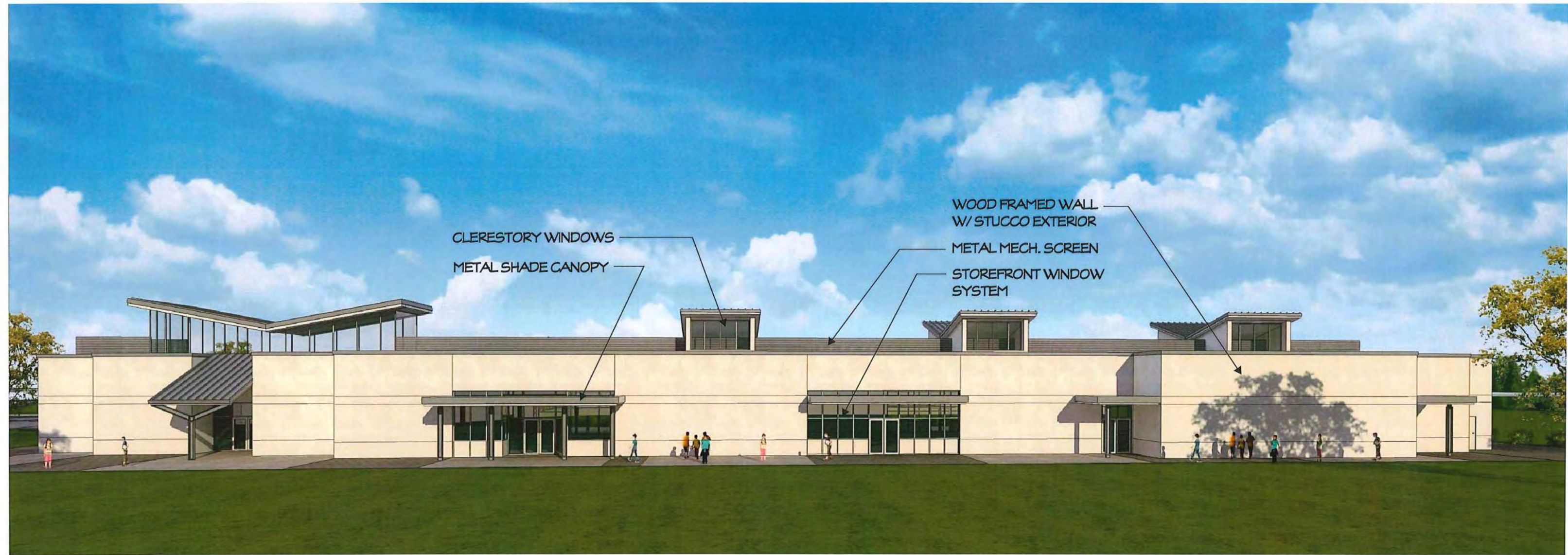
OUTDOOR LEARNING

WOOD FRAMED WALL W/
STUCCO EXTERIOR

METAL MECH. SCREEN

STOREFRONT WINDOW
SYSTEM





CLERESTORY WINDOWS

METAL SHADE CANOPY

WOOD FRAMED WALL
W/ STUCCO EXTERIOR

METAL MECH. SCREEN

STOREFRONT WINDOW
SYSTEM



STUCCO OVER
WOOD FRAME

CMU

CONCRETE COLUMNS

CONCRETE PLAZA

EVENT CENTER

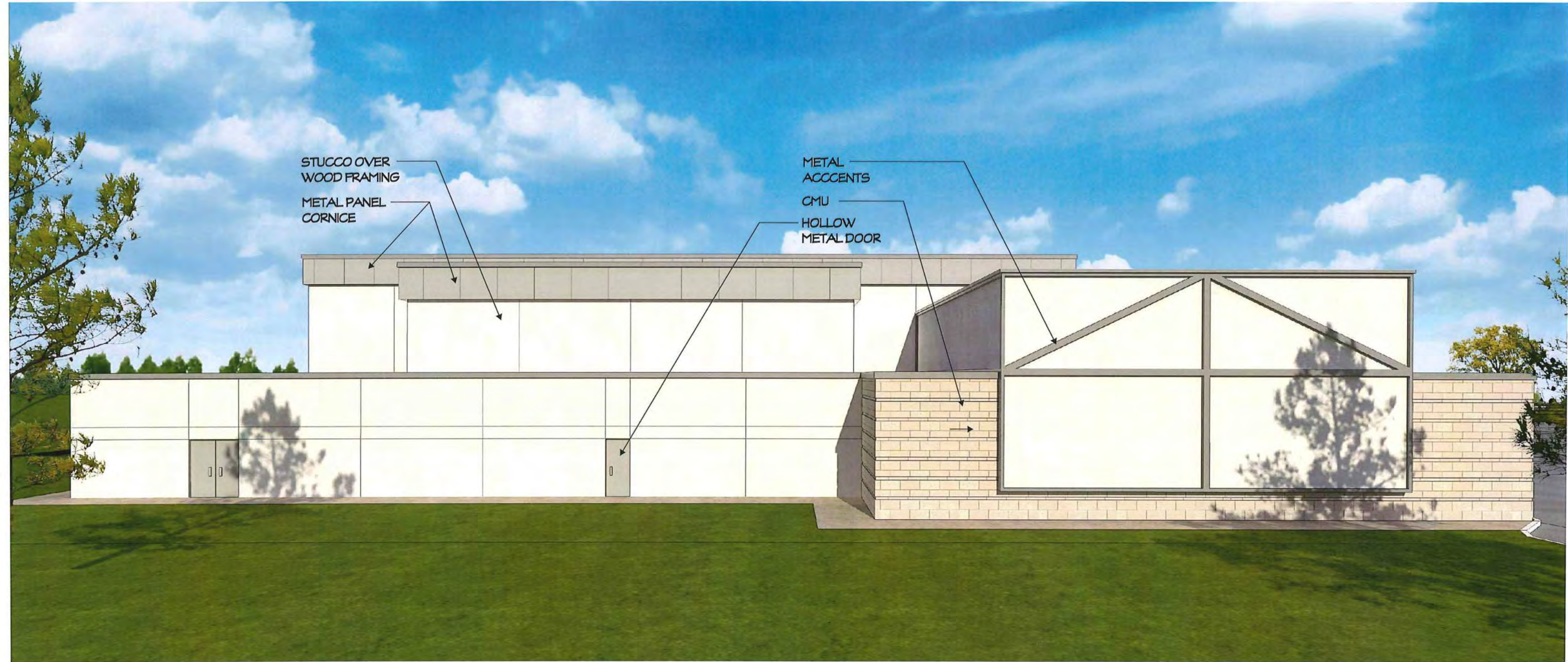
STUCCO OVER
WOOD FRAMING

METAL PANEL
CORNICE

METAL
ACCENTS

CMU

HOLLOW
METAL DOOR



#15